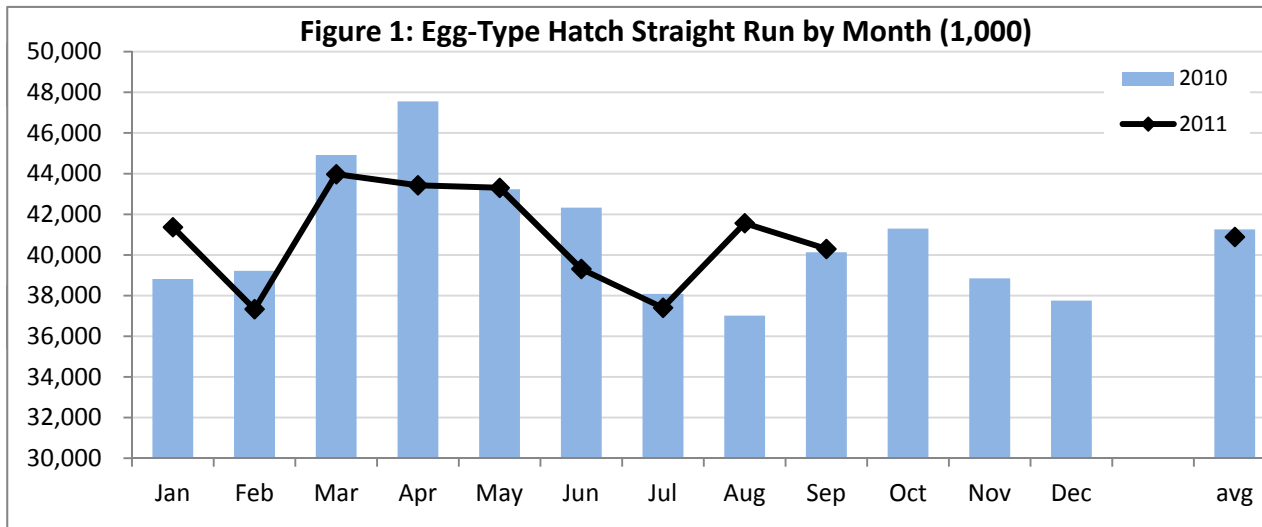


EGG TYPE: EGGS IN INCUBATORS (on the 1st of the month) and STRAIGHT RUN HATCH (U.S.) TABLE 1

EGG-TYPE Eggs in Incubators (thousands)				EGG-TYPE Straight Run Hatch (thousands)			
month	2010	2011	Change (%)	month	2010	2011	Change %
JAN 1	38,929	38,693	-0.6	JAN	38,819	41,366	6.6
FEB 1	39,338	39,701	0.9	FEB	39,218	37,336	-4.8
MAR 1	38,773	39,975	3.1	MAR	44,914	43,974	-2.1
APR 1	43,031	40,848	-5.1	APR	47,558	43,429	-8.7
MAY 1	41,692	40,782	-2.2	MAY	43,231	43,305	0.2
JUN 1	38,346	37,629	-1.9	JUN	42,331	39,313	-7.1
JUL 1	37,607	34,016	-9.5	JUL	38,089	37,405	-1.8
AUG 1	33,381	37,117	11.2	AUG	37,014	41,564	12.3
SEP 1	37,109	39,141	5.5	SEP	40,130	40,298	0.4
OCT 1	39,705	36,546	-8.0	OCT	41,300		
NOV 1	38,646			NOV	38,849		
DEC 1	37,445			DEC	37,759		
10 month avg.	38,791	38,445	-0.7	9 month avg.	41,256	40,888	-0.6
10 month total	387,911	384,448		9 month total	371,304	367,990	
12 month total	464,002			12 month total	489,212		

Source: USDA NASS Chickens and Eggs



AVERAGE U.S. LAYERS AND TABLE EGG LAYERS 2010/2011 (MILLIONS) TABLE 2

month	All Layers			Table Egg Layers			
	2010	2011	Change (%)	2009	2010	2011	Change (%)
Jan	340.6	341.7	0.3	284.5	283.2	284.5	0.5
Feb	340.5	339.3	-0.3	283.7	282.4	282.0	-0.1
Mar	342.1	340.5	-0.5	283.5	283.7	283.0	-0.3
Apr	341.3	340.7	-0.2	282.9	282.5	282.9	0.1
May	339.3	337.9	-0.4	280.0	280.7	279.9	-0.3
Jun	339.8	336.5	-1.0	277.0	281.4	278.9	-0.9
Jul	339.9	336.1	-1.1	276.3	281.8	279.3	-0.9
Aug	340.1	336.0	-1.2	276.8	282.9	281.0	-0.7
Sep	338.7	335.8	-0.9	278.5	282.2	281.6	-0.2
Oct	336.8			280.6	279.0		
Nov	339.4			282.4	281.1		
Dec	342.7			283.3	284.6		
9 month avg.	340.3	338.3	-0.6	280.3	282.3	281.5	-0.3
Annual avg.	340.1			280.8	282.1		

Source: USDA NASS Chickens and Eggs

Table egg layers as a % of all layers to date (2011):

83.2



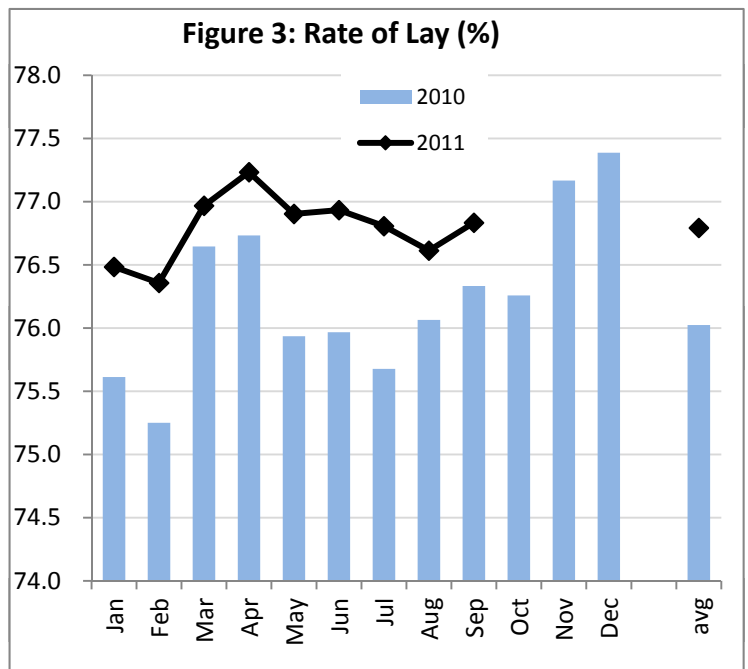
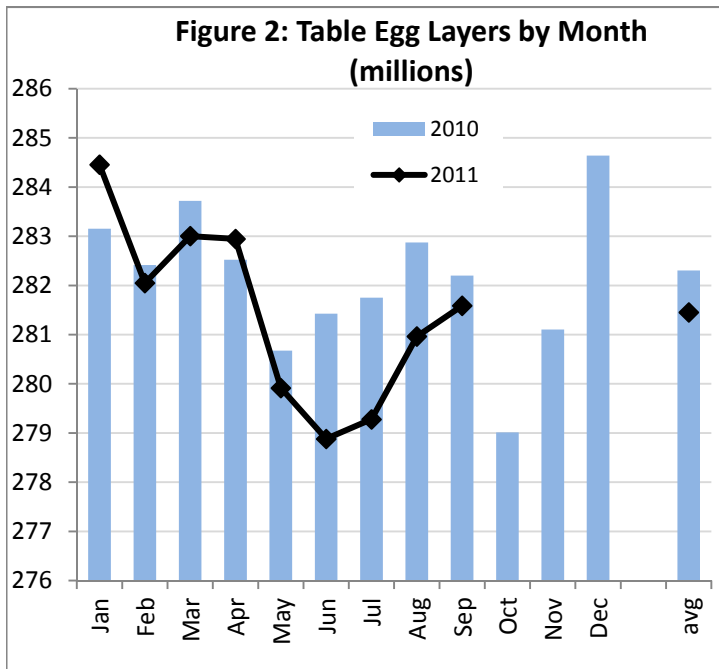
U.S. ALL EGGS, TABLE EGGS AND RATE OF LAY (ALL STATES)

TABLE 3

month	All Eggs (millions)			Table Eggs (millions)			Rate of Lay (Table)	
	2010	2011	Change (%)	2010	2011	Change (%)	2010	2011
Jan	7,724	7,821	1.3	6,637	6,739	1.5	75.6	76.5
Feb	6,935	7,006	1.0	5,950	6,029	1.3	75.3	76.4
Mar	7,839	7,836	0.0	6,740	6,754	0.2	76.6	77.0
Apr	7,578	7,617	0.5	6,503	6,555	0.8	76.7	77.2
May	7,716	7,777	0.8	6,607	6,671	1.0	75.9	76.9
Jun	7,484	7,505	0.3	6,415	6,438	0.4	76.0	76.9
Jul	7,719	7,740	0.3	6,610	6,656	0.7	75.7	76.8
Aug	7,765	7,734	-0.4	6,669	6,671	0.0	76.1	76.6
Sep	7,514	7,509	-0.1	6,464	6,490	0.4	76.3	76.8
Oct	7,698			6,618			76.3	
Nov	7,573			6,538			77.2	
Dec	7,920			6,850			77.4	
9 month avg.	7,586	7,616	0.4	6,511	6,556	0.7	76.0	76.8
Annual avg.	7,622			6,550			76.3	
Total	91,465			78,601				

Source: USDA NASS Chickens and Eggs

	% Change			
Total shell eggs through:	September	58,595	59,003	0.7
Year 2010/11 - Table Eggs				Proj. 2011 (monthly avg. x 12)
Ann. total (eggs)	78.6	billion	78.7	
(doz)	6.6	billion	6.6	
(cases)	218.3	million	218.5	



SHELL EGGS BROKEN UNDER FEDERAL INSPECTION (MILLION CASES)

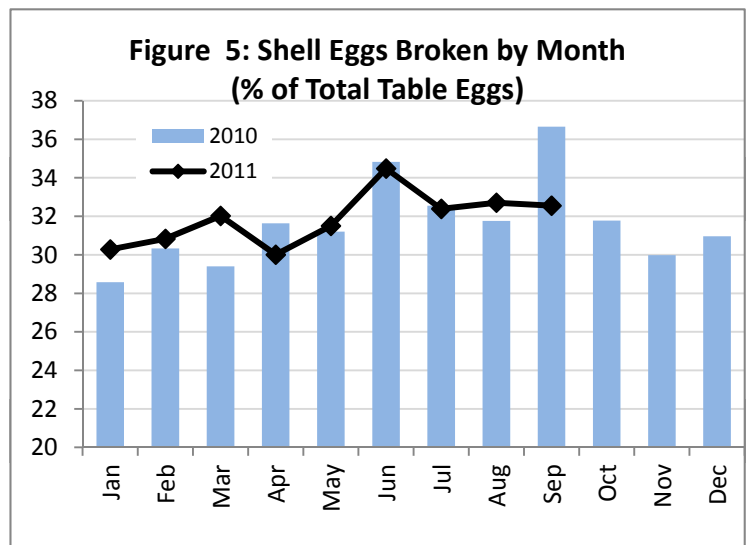
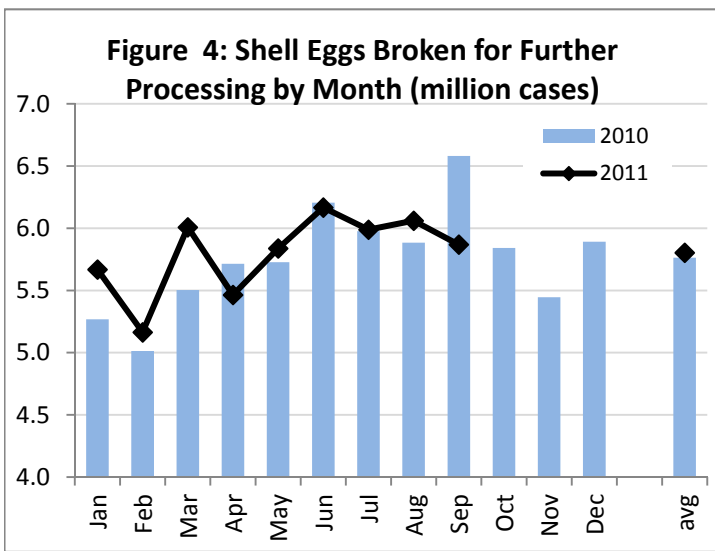
TABLE 4

month	2005	2006	2007	2008	2009	2010	2011	11/10 (%) Change
JAN	5.316	5.518	5.321	5.732	5.427	5.268	5.668	7.6
FEB	5.170	5.302	5.007	5.058	4.921	5.013	5.163	3.0
MAR	5.999	5.670	5.595	5.423	5.358	5.504	6.008	9.2
APR	5.582	5.408	5.205	5.900	5.528	5.714	5.464	-4.4
MAY	5.764	5.863	5.885	5.933	5.624	5.727	5.838	1.9
JUN	6.162	5.897	5.706	5.612	5.961	6.206	6.167	-0.6
JUL	5.610	5.715	5.541	6.098	5.841	5.977	5.988	0.2
AUG	6.017	6.078	6.154	5.681	5.727	5.884	6.061	3.0
SEP	5.932	5.576	5.499	5.974	5.671	6.582	5.869	-10.8
OCT	5.765	5.637	6.038	6.105	5.744	5.842		
NOV	5.581	5.366	5.320	5.320	5.032	5.445		
DEC	5.357	5.411	5.294	5.424	5.621	5.891		
9 month avg.	5.728	5.670	5.546	5.712	5.562	5.764	5.803	1.0
9 month total	51.552	51.027	49.913	51.411	50.059	51.875	52.225	
12 month total	68.255	67.441	66.565	68.260	66.455	69.054		

Source: USDA NASS Egg products - monthly

Million Cases Produced
% BROKEN

202.467	212.178	213.886	215.858	218.336	163.897
33.3	31.4	31.9	30.8	31.6	31.9



PER CAPITA EGG CONSUMPTION BY QUARTER

TABLE 5

QUARTER	2004	2005	2006	2007	2008	2009	2010	2011*
1	63.7	63.4	64.1	62.2	61.8	62.0	61.4	60.9
2	63.9	63.0	63.7	61.7	61.3	61.5	61.3	61.2
3	64.1	63.5	63.9	62.4	62.0	61.4	62.0	62.0
4	65.5	65.0	64.7	63.8	63.8	62.9	62.7	62.1
Total	257.3	255.8	257.8	250.1	248.9	247.7	247.3	246.3

Change from previous year (eggs)

-1.5	2.0	-7.7	-1.2	-1.2	-0.4	-1.0
------	-----	------	------	------	------	------

Source: USDA ERS Livestock and Meat Trade Data.

* Estimates for 2011 (9/2011)

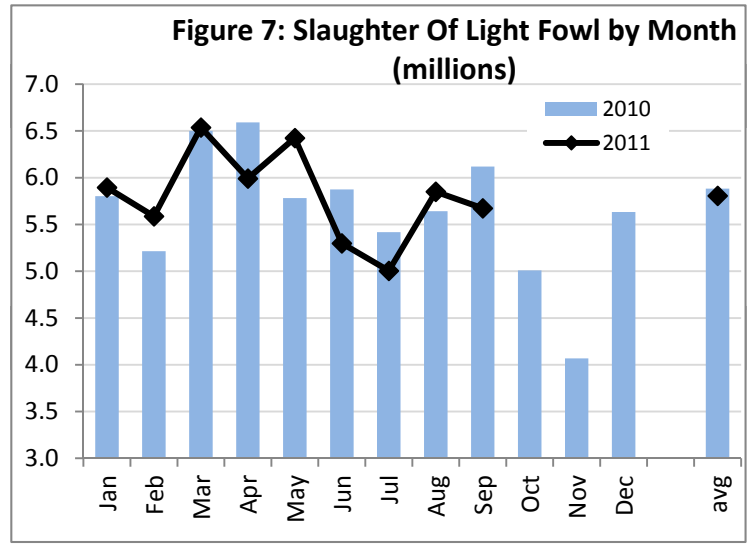
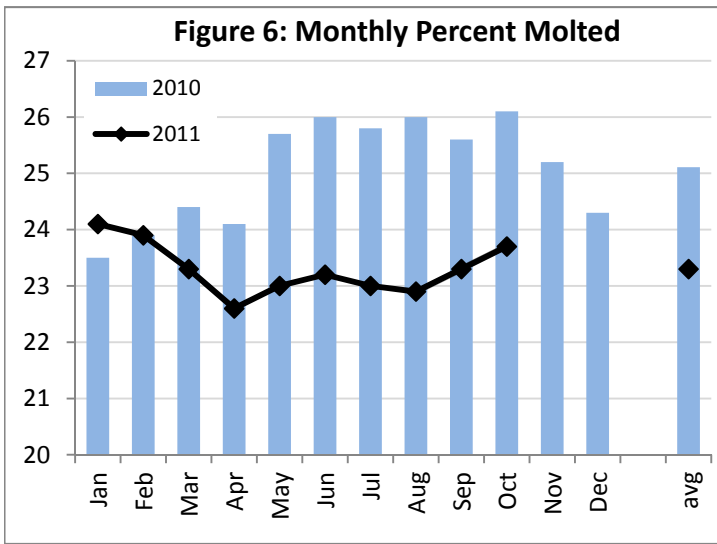


INDUCED MOLT PERCENT - U.S. TOTALS (1ST OF MONTH)

TABLE 6

month	In a Molt			Completed a Molt		Total		
	2010	2011	Change	2010	2011	2010	2011	Change
Jan	2.7	2.8	0.1	20.8	21.3	23.5	24.1	0.6
Feb	3.6	3.6	0.0	20.3	20.3	23.9	23.9	0.0
Mar	3.2	3.1	-0.1	21.2	20.2	24.4	23.3	-1.1
Apr	2.8	2.6	-0.2	21.3	20.0	24.1	22.6	-1.5
May	4.2	3.0	-1.2	21.5	20.0	25.7	23.0	-2.7
Jun	3.3	3.8	0.5	22.7	19.4	26.0	23.2	-2.8
Jul	3.3	3.5	0.2	22.5	19.5	25.8	23.0	-2.8
Aug	3.4	3.6	0.2	22.6	19.3	26.0	22.9	-3.1
Sep	2.6	3.3	0.7	23.0	20.0	25.6	23.3	-2.3
Oct	4.4	3.8	-0.6	21.7	19.9	26.1	23.7	-2.4
Nov	2.7			22.5		25.2		
Dec	1.8			22.5		24.3		
10 month avg.	3.4	3.3	0.0	21.8	20.0	25.1	23.3	-1.8
12 month avg.	3.2			21.9		25.1		

Source: USDA NASS Chickens and Eggs



SLAUGHTER OF LIGHT FOWL (MILLIONS)

TABLE 7

month	2005	2006	2007	2008	2009	2010	2011	6 YR (05-10) month avg.
JAN	5.18	6.44	4.69	6.33	5.24	5.80	5.90	5.61
FEB	5.58	4.49	4.32	5.36	4.46	5.22	5.59	4.90
MAR	7.26	4.62	4.99	6.32	5.17	6.50	6.54	5.81
APR	7.10	4.65	4.75	6.58	5.30	6.59	5.99	5.83
MAY	6.83	4.95	4.89	6.32	5.69	5.78	6.42	5.74
JUNE	7.18	4.50	5.04	6.36	6.20	5.88	5.30	5.86
JULY	5.54	3.72	4.55	5.94	5.55	5.42	5.00	5.12
AUG	6.15	4.33	5.02	5.46	5.48	5.64	5.85	5.35
SEPT	5.41	4.02	3.83	5.20	5.47	6.12	5.67	5.01
OCT	5.00	4.44	4.78	5.85	5.08	5.01		5.03
NOV	5.47	3.66	4.50	4.44	4.19	4.07		4.39
DEC	6.14	5.74	4.17	5.53	5.76	5.63		5.49
9 month avg.	6.25	4.64	4.68	5.98	5.40	5.88	5.81	5.47
12 month avg.	6.07	4.63	4.63	5.81	5.30	5.64		5.35
12 month total	72.84	55.57	55.53	69.68	63.57	67.66		64.14

Source USDA NASS Poultry Slaughter

